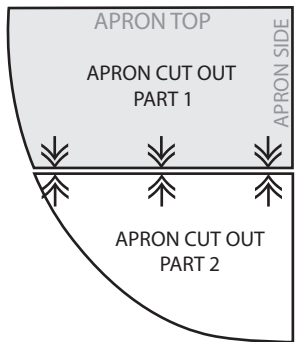
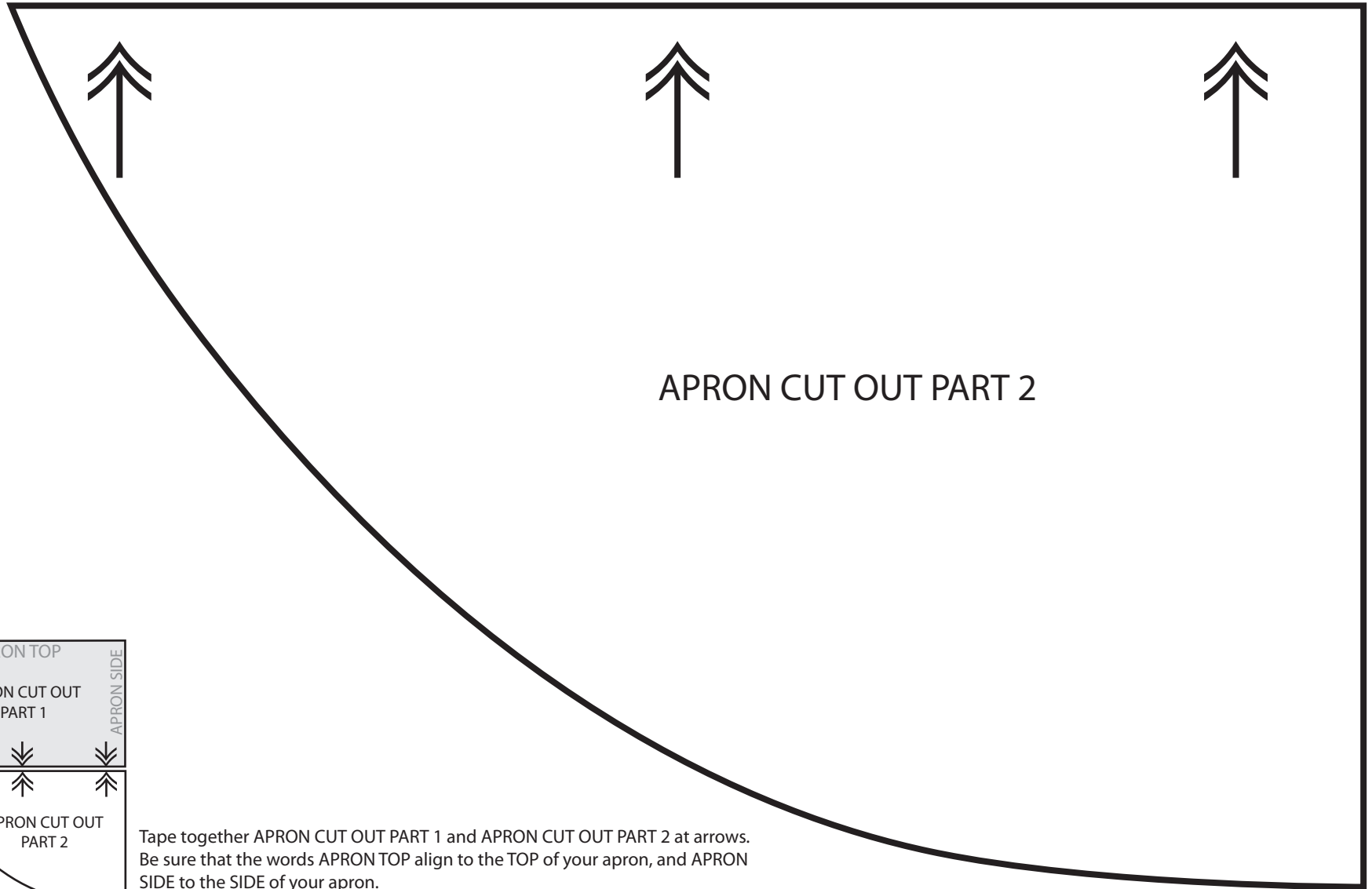


Tape together APRON CUT OUT PART 1 and APRON CUT OUT PART 2 at arrows. Be sure that the words APRON TOP align to the TOP of your apron, and APRON SIDE to the SIDE of your apron.

IMPORTANT: Print this .pdf file actual size; do not size or scale to fit page.
Copyright ©2009-2013 Sew4Home LLC.
All Rights Reserved.

sew4home™
Transform your space.

Confirm your printer output is correct. This line is 8 inches long.



Tape together APRON CUT OUT PART 1 and APRON CUT OUT PART 2 at arrows. Be sure that the words APRON TOP align to the TOP of your apron, and APRON SIDE to the SIDE of your apron.